

Finally, for step 3, insert through the holes in the main shielding, and then into the motherboard. If you have trouble with reach, make sure the cartridge bay is flush with the main shielding, and optionally insert a cartridge so that the springy part will give you more clearance.

### **Still having issues?**

If you need further help, feel free to email [backbitio@gmail.com](mailto:backbitio@gmail.com).

### **Let's Play a Game!**



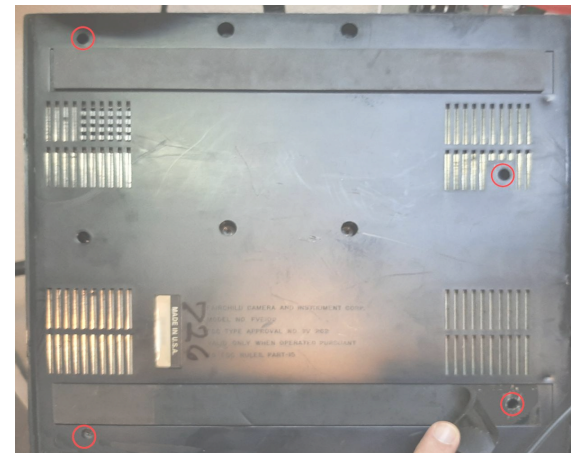
# Backbitio

## Fairchild Channel F

### **Replacement Cartridge Cables Installation Guide**

NOTE: This guide only applies to System I.  
The installation for System II should be similar.

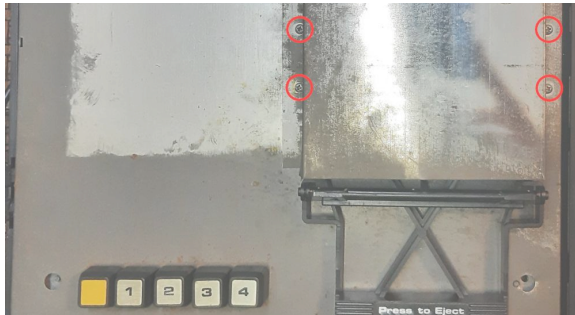
### **Opening the case**



Remove the 4 screws, including one underneath the rubber foot.

### **Underneath the hood**

You should at this point be able to lift the top off. If some screws don't come loose, try unscrewing them while pulling on the lid. If you've been successful, you should now see the shielding. Unscrew the 4 screws holding down the cartridge bay shielding, as shown in the following diagram.



The keys should pop right off, which will be necessary for lifting the main shielding.



### **Remove the cartridge bay**

Remove these 4 black screws, and then the cartridge bay should just be attached by the cables which you will be replacing. Try to lift the main shielding from the front side where the keys and eject button are located. You may have to loosen the power connector or RF cable to do so.



### **Cable replacement**

It should be possible now to remove the old cartridge bay cables. They should come loose easily from the motherboard and the cartridge bay. If they are in bad shape they might tear, and you might have to apply some isopropyl alcohol to loosen things up. Before installing the new cables, you might want to apply some distilled white vinegar to the metal fingers where the cartridge makes contact. There tends to be mineral buildup which can prevent the cartridge board from making good contact. If you are adventurous, you can disassemble the entire bay (allowing you to soak just the piece with the metal fingers), but have some superglue ready as the plastic parts are brittle and can break easily.

Once the old cables are removed, it's time to install the new cables. Step 1 is to insert the cable as shown (either end, but with the blue end cover facing you). It should have a snug fit. Then for step 2, twist it over itself, and through the slit in the plastic.

